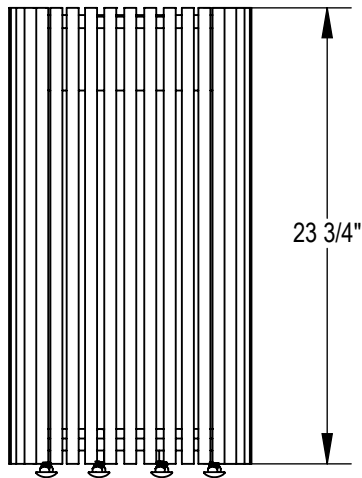
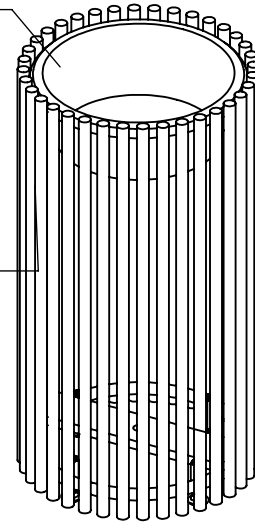


STAINLESS STEEL  
ASH TRAY INSERT

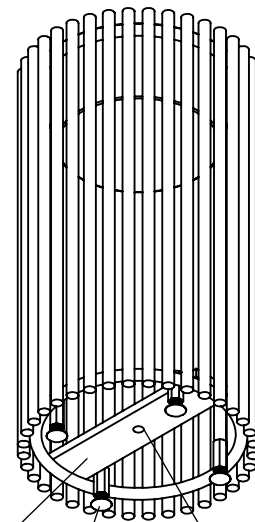
5/8" DIA. SOLID STEEL ROD



1/2" X 3" FLAT BAR

Ø 9/16" MOUNTING HOLE

STAINLESS  
STEEL LEVELING  
FEET



PRODUCT: GNAR  
 DESCRIPTION: GENOVA ASH RECEPTACLE

DATE: 3-10-20  
 ENG: SMC  
 CONFIDENTIAL DRAWING AND INFORMATION IS NOT TO BE COPIED OR DISCLOSED  
 TO OTHERS WITHOUT THE CONSENT OF GRABER MANUFACTURING, INC.  
 SPECIFICATIONS ARE SUBJECT TO CHANGE WITHOUT NOTICE.

STAINLESS STEEL ASH LID IS ATTACHED WITH  
 STEEL VINYL COATED CABLE

SITE FURNISHING IS POWDER COATED WITH TGIC POLYESTER.  
 STEEL SURFACE PREP INCLUDES MECHANICAL AND CHEMICAL  
 ETCHING FOLLOWED WITH A COATING TO IMPROVE ADHESION  
 AND CORROSION RESISTANCE.